

Getting Started

User's Guide – Ocean – August 2011



Innovative X-ray QA solutions... of course!



Ocean



Ocean

Ocean is a powerful software tool for X-ray Quality Assurance work. You can set up templates to perform testing, analyze, document, and store your data and results. It operates with the Piranha and Barracuda and offers automated measurements to increase your productivity.

There are three different levels for Ocean: **Display**, **Connect** and **Professional**.

Display is used as a display for your meter. It allows you to set-up measurements, log data and store them. You can design your display according to your specific needs and store templates. You can easily recall these templates when you need to do a certain measurement. You will see your measured values, along with waveforms.

Connect includes Display's features but also allows you also to link data directly into Excel. You can use Ocean Connect to directly fill out you Excel spreadsheets with measured values from the meter.

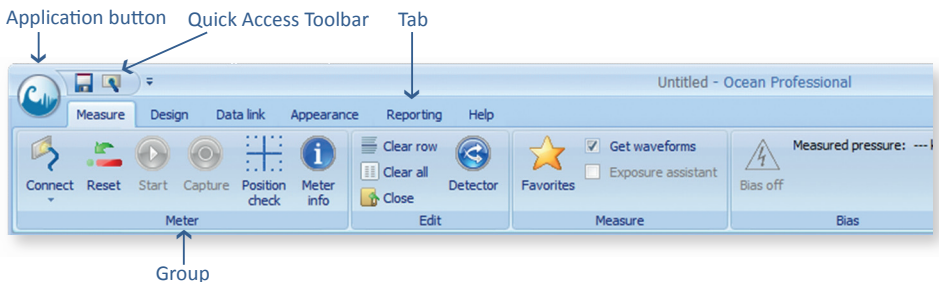
Professional Ocean Professional offers everything Ocean Display and Connect offer, including the possibility to set-up customized templates that help organize and perform complete X-ray room QA. Templates can include measured data with the meter, analysis of the data according to the pass/fail criteria, captured waveforms, and associated checklists. Data are stored and a report is generated.

General Information

To operate Ocean with your meter, the meter must have an Ocean license installed: Display, Connect or Professional. When you connect your meter to Ocean, the license is verified and Ocean will indicate the licence level on its main caption bar.

If your meter doesn't have a license, you can get the free Display license from RTI Electronics by visiting www.rti.se/try-ocean-for-free. You have two possibilities to also look around in Ocean Connect and Ocean Professional. Under the "Help"-tab on the ribbon bar you can select "Trial". You can test without a meter connected and run Ocean in "Keyboard" mode – then there is no time limit. Or, if you instead would like to test with your meter connected, you get a free trial period for 45 days (starting right away). After the 45 days have elapsed, Ocean will return to your original license level.

Remember to do a backup of your data (under the "Help"-tab) before you start using the 45-day-trial period – otherwise you risk losing measurements when Ocean goes back to the original license level. Data and templates stored in Ocean Connect/Professional will be available again if you choose to upgrade your license level.



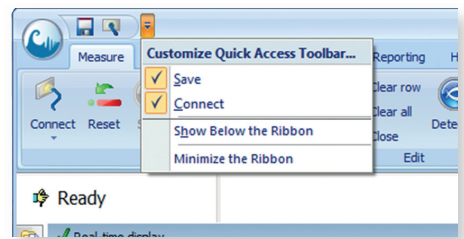
Ribbon Bar

The Ribbon is the command bar that organizes Ocean's features and makes them easy to access via tabs at the top of the Ocean window. In the upper left corner is the **Application button**. If you click it, the **Application menu** is shown.

Also located at the top is the **Quick Access Toolbar**. You can customize the Quick Access Toolbar if you select **More commands**.

Use **Minimize the Ribbon** if you want to compress the Ribbon. This is especially useful when

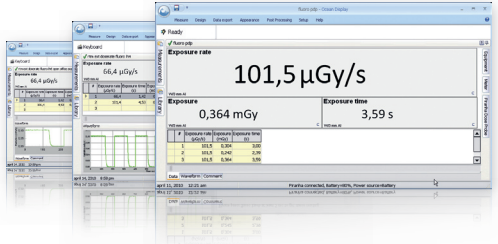
using a Netbook since the screen height is limited. The Ribbon has six tabs where you can access the main functions.



Installation

Requirements:

- Windows XP, Window Vista or Windows 7
- USB or Bluetooth
- Display graphics: 800x600 or higher
- **Note!** You will need to have access to an administrative account to install the software



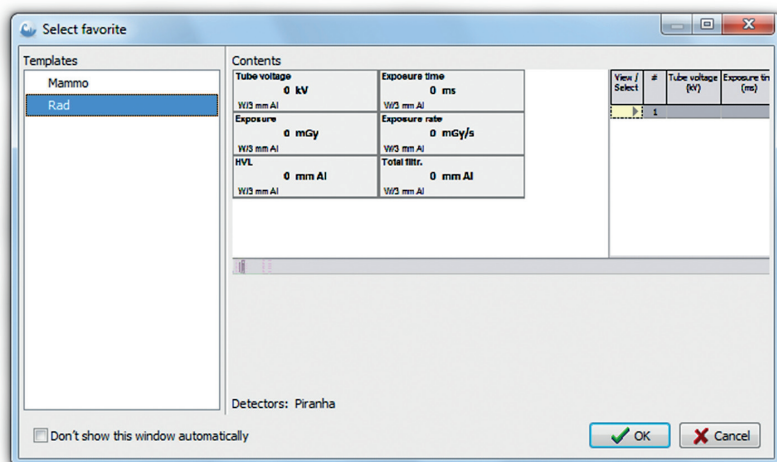
1. Insert the product CD into the CD drive. The CD menu starts automatically (if not, locate and run Start.exe). If you are not using the Product CD, run the file Setup Ocean.exe.
2. Move the cursor to Install and select Ocean.
3. The Installer starts. Just follow the instructions on the screen.
4. Ocean will be installed. After the installation of Ocean is finished, the Installer for the Microsoft Access database engine starts automatically. It is required to run Ocean.
5. There are two different possible scenarios:
 - **You already have Microsoft Office Access database engine on your computer.** In this case a dialogue will be shown that asks you if you want to Reinstall/Repair or Uninstall the database engine. Click on the Cancel button at the bottom of the dialogue. Confirm that you want to abort and continue all the way until you are back to the RTI CD Software menu.
 - **You don't have Microsoft Office Access database engine on your computer.** The installation starts automatically if you don't have the database engine on your computer. Just follow the instructions on screen to complete the installation.
6. Exit the RTI CD Software menu.

Getting Started

Starting Ocean for the first time, the "Select favorite" screen will be shown. You can at any time load a real-time display template from the [Library](#). Read the "start a new real-time display" in the User's Manual for a complete description.

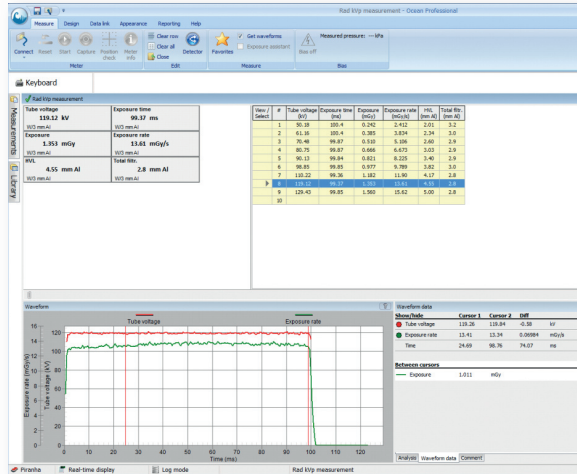
Your First Measurement:

1. Connect the meter to your computer. The USB cable is recommended the first time.
2. Power on your meter.
3. Start Ocean. If it is the very first time you start Ocean a "Start-up wizard" will be shown. Go through the wizard and answer the required questions. It is important to select meter, modalities and parameters before you continue.
4. After you have finished the wizard, the "Select favorite" screen is shown:

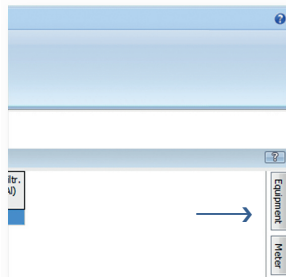


5. Select a [Template](#) that suits what you want to do and the meter you have.
6. Click OK.
7. Ocean will now connect to your meter and load the real-time display you selected.

8. If you are measuring on mammography or CT you may want to select another calibration. The calibration is shown in the the lower left corner of the display. Click on it if you want to change it.



9. Make an exposure.
10. The result will be shown in the display and a waveform will be shown in the waveform window.
11. You can now make more exposures.
12. If you need to change meter settings, pull out the **meter adjust tabs** located on the right side of the main window by just clicking on the tab.



- Click on the **save button** (on the **Quick Access Toolbar** or on the **Application menu**) to save your file. You will be asked to specify a name.
- Your file is now saved in the database. You can find it if you open the **Measurements tab**.

There are three ways to load another template. 1. From the [Favorites](#), 2. Load a real-time display template from the [Library](#), 3. Design your own real-time display by selecting [New](#) in the [Application menu](#).

Some important definitions

The following definitions are important to understand when you use this help text.

Acceptance limits: The pass and fail criteria set-up in a test.

Analysis: This is a calculation done to a number of exposures to evaluate the performance of the x-ray generator.

Checklist: A checklist is a list with questions that is a part of the testing procedure.

Equipment: The equipment in a room that is to be tested.

General settings: Set values that are common for the entire test.

Grid: The grid is where all measured data and set values are stored. It consists of a number of columns and rows.

Meter settings: Settings for the meter, controls meter functions.

Real-time display: A real-time display is a set-up that is used for quick measurements when data needs to be collected quickly.

Session: A session is specifying a complete job. It is normally a number of test protocols and one or more checklists.

Site: A site is the place where a testing procedure, a session, is performed. A site is a facility, department and a room with its equipment.

Template: A template is a “blank protocol”.

Test: A test describes a number of exposures to be performed to do a certain analysis of the the x-ray system.

Main Screen

All functions are found on the Ribbon. The ribbon is divided into six tabs:

Measure – Functions you need when you measure.

Design – Functions for creating templates.

Data link – Link data to Microsoft Excel or OpenOffice Calc.

Appearance – Change how things are arranged on the screen.

Reporting – Create reports and print-outs.

Status Bars

Just below the ribbon and at the bottom of the main screen you see the two status bars.

The upper status bar – The left part shows what the meter does and the right part is used to communicate with the user.

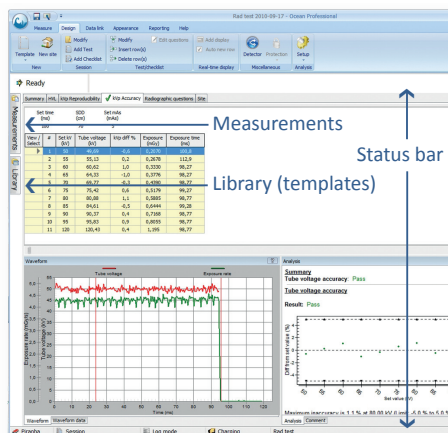
The lower status bar – Indicates current used meter status, work mode, battery indicator for the meter and more.

Data Tabs

On the left side of the main screen you have two tabs:

Measurements – Here all your measured data are saved. All data saved from measurements with the real-time display are saved here. If you are using Professional you also have all your sites stored with their corresponding data.

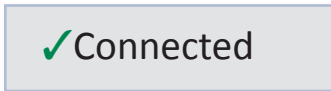
Library – All your templates are stored here. A template is a “blank protocol” without any measured data recorded.



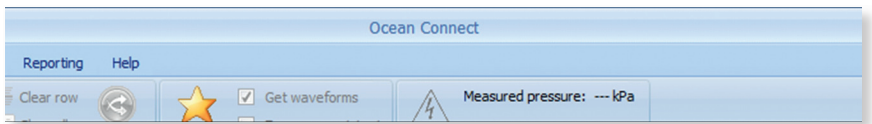
Find Out Which License You Have

The license level is stored in your meter and displayed each time you start Ocean. If you are unsure which level you have:

1. Power on your meter.
2. Connect the meter to your computer.
3. Start Ocean.
4. A window titled “Select favorite” is now shown. Click Cancel to close it.
5. Go to the [Measure tab](#) on the ribbon and click on [Connect](#).



6. Ocean will now try to connect to your meter.
7. If everything is normal, the Caption bar will shortly indicate the version of Ocean that you have.



World Headquarters

RTI Electronics AB, Sweden

Flöjelbergsgatan 8 C, SE – 431 37 Mölndal

Phone: +46 (0)31 746 36 00

info@rti.se • www.rti.se

US Office

RTI Electronics Inc, USA

1275 Bloomfield Ave, Bldg. 5, Unit 29A,

Fairfield, NJ 07004 • Phone: 1-800-222-7537

sales@rtielectronics.com • www.rtielectronics.com